



# Milpitas Gateway – Main Street Specific Plan

June 29, 2022 | Workshop #1



# Zoom - La Interpretacion

## Live Interpretation in Spanish & Vietnamese

**La interpretación en simultáneo para esta reunión se dará en los siguientes idiomas:**

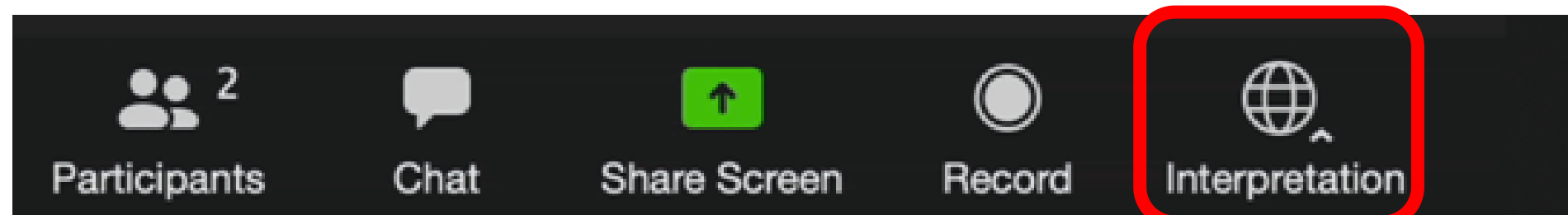
Español – bajo la opción Español

Por favor haz clic en el icono INTERPRETATION en tu barra de herramientas para acceder al idioma deseado

**Vietnamese Translation: Simultaneous interpretation for this meeting will be provided in the following languages:**

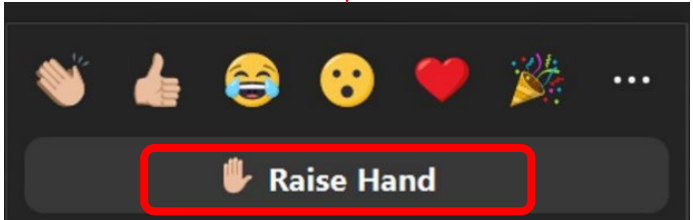
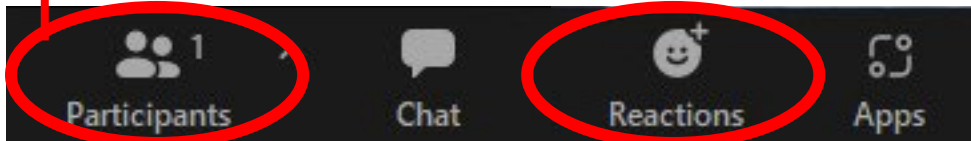
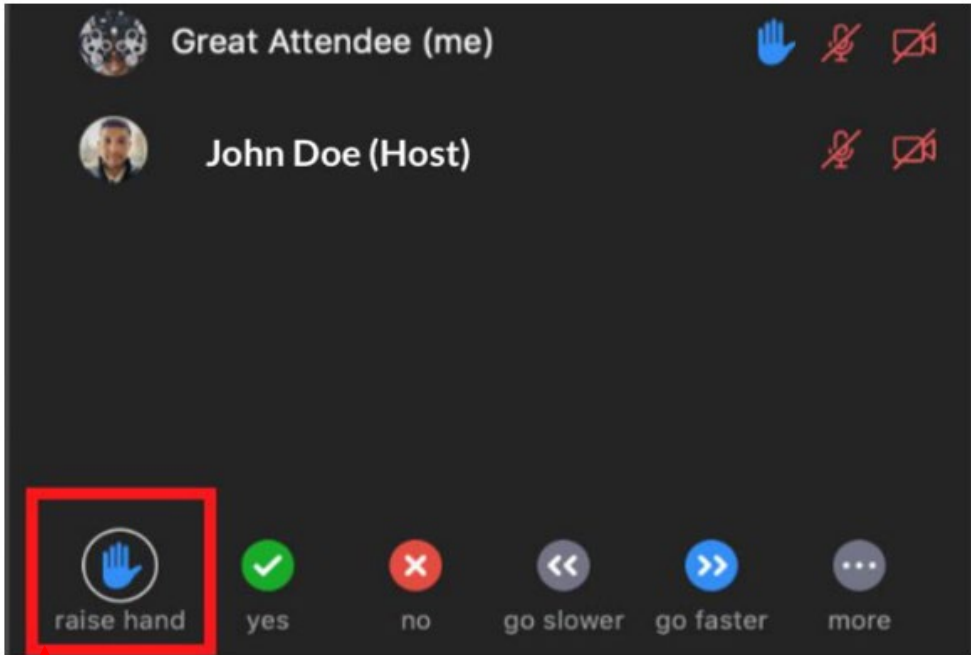
Vietnamese – under the Japanese option

Please click on the INTERPRETATION icon on your toolbar to access the desired language

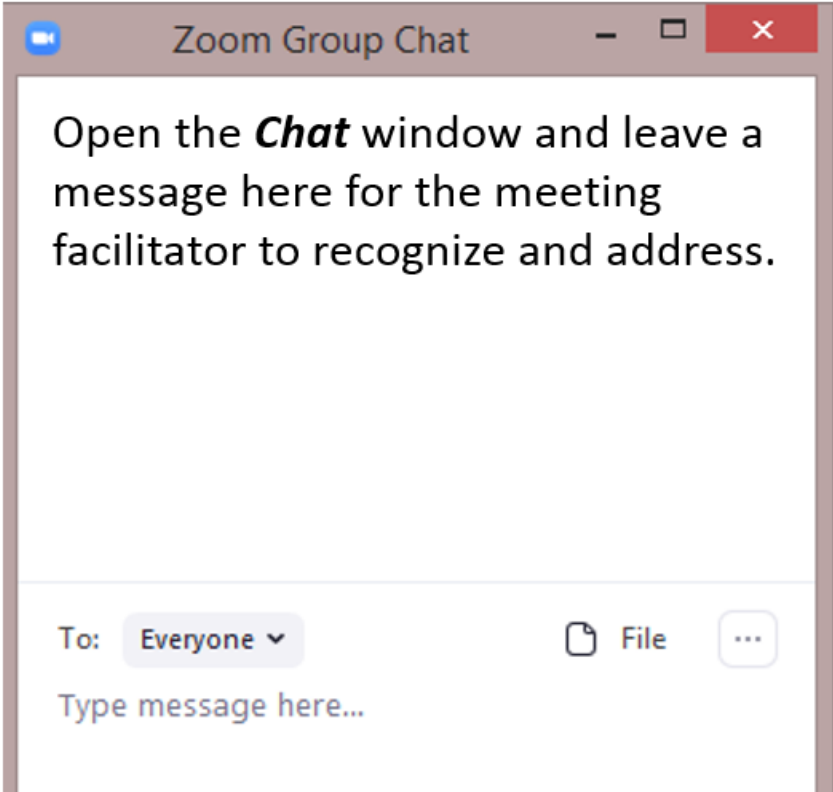


# HOW WILL THE MEETING BE FACILIATED?

## RAISE HAND VIRTUALLY THROUGH PARTICIPANTS/REACTIONS WINDOW



## CHAT WINDOW



# Welcome and Introductions

## *City Facilitation Team*

Ned Thomas, Planning Director

Jay Lee, Principal Planner

Liz Medina, Administrative  
Assistant

Michael Fossati, Senior Planner

James Atkins, Associate Planner

Kristina Phung, Associate  
Planner

Jessica Thiragirayuta, Planning  
Technician

## *Consultant Facilitation Team*

### **Ascent Urban Design + Planning**

Christine Babla

Anh Thai

Sangwoo Lee

Tracy Prybyla

Matt Gelbman

Angela Khermouch

### **Plan to Place Community Engagement**

Dave Javid

Paul Krosner

### **Excel Interpreting Interpretation**

Guillermo (Memo) Rodriguez,  
Spanish

Teresa Thai, Vietnamese



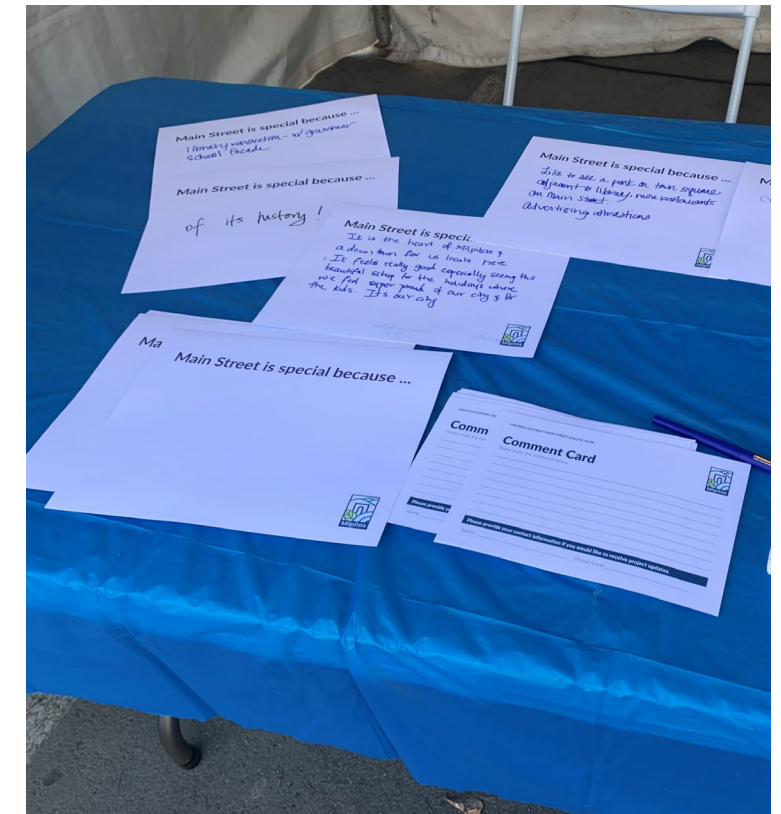
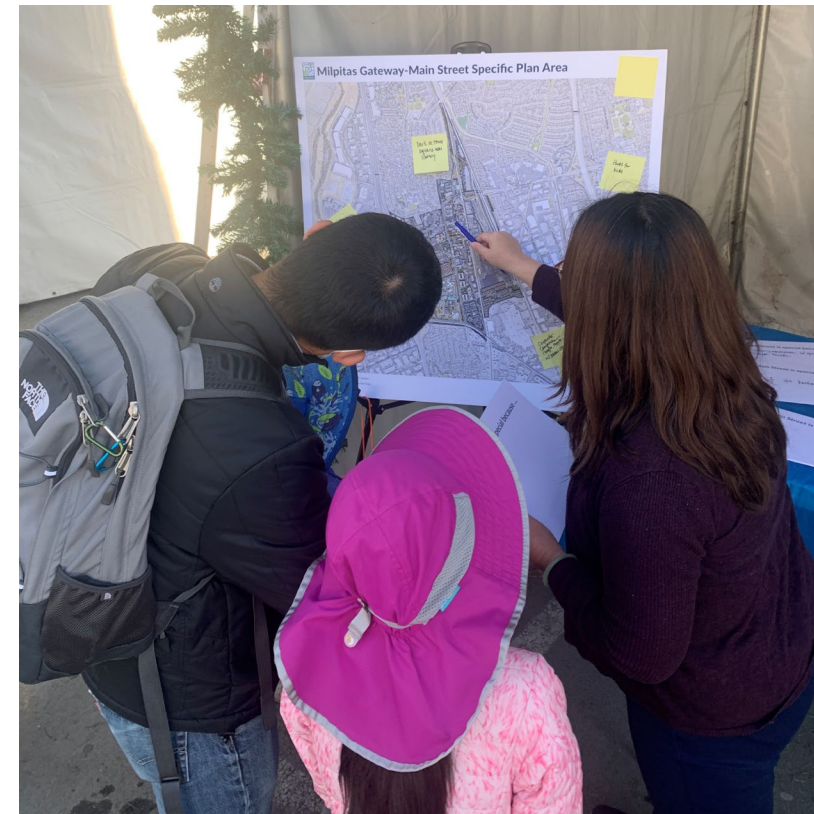
# Preliminary Outreach Feedback

## Community Conversations - Themes

- 3 sessions with breakout rooms and report-backs.
- Interest in growing local economy with diverse local businesses.
- Desire for family-friendly activities, community spaces, and nightlife.

## Holiday Magic Pop-Up Feedback

- Direct feedback from event participants.
- Excitement about Main Street being a real downtown and a place to go/be.





# Agenda

1. Welcome and Introductions
2. Presentation
  - Project Introduction
  - Opportunities: What do you envision?
3. Activities
  - Polling Questions
  - Small Group Breakout Discussion
  - Report Back
4. Next Steps



1

# Project Introduction

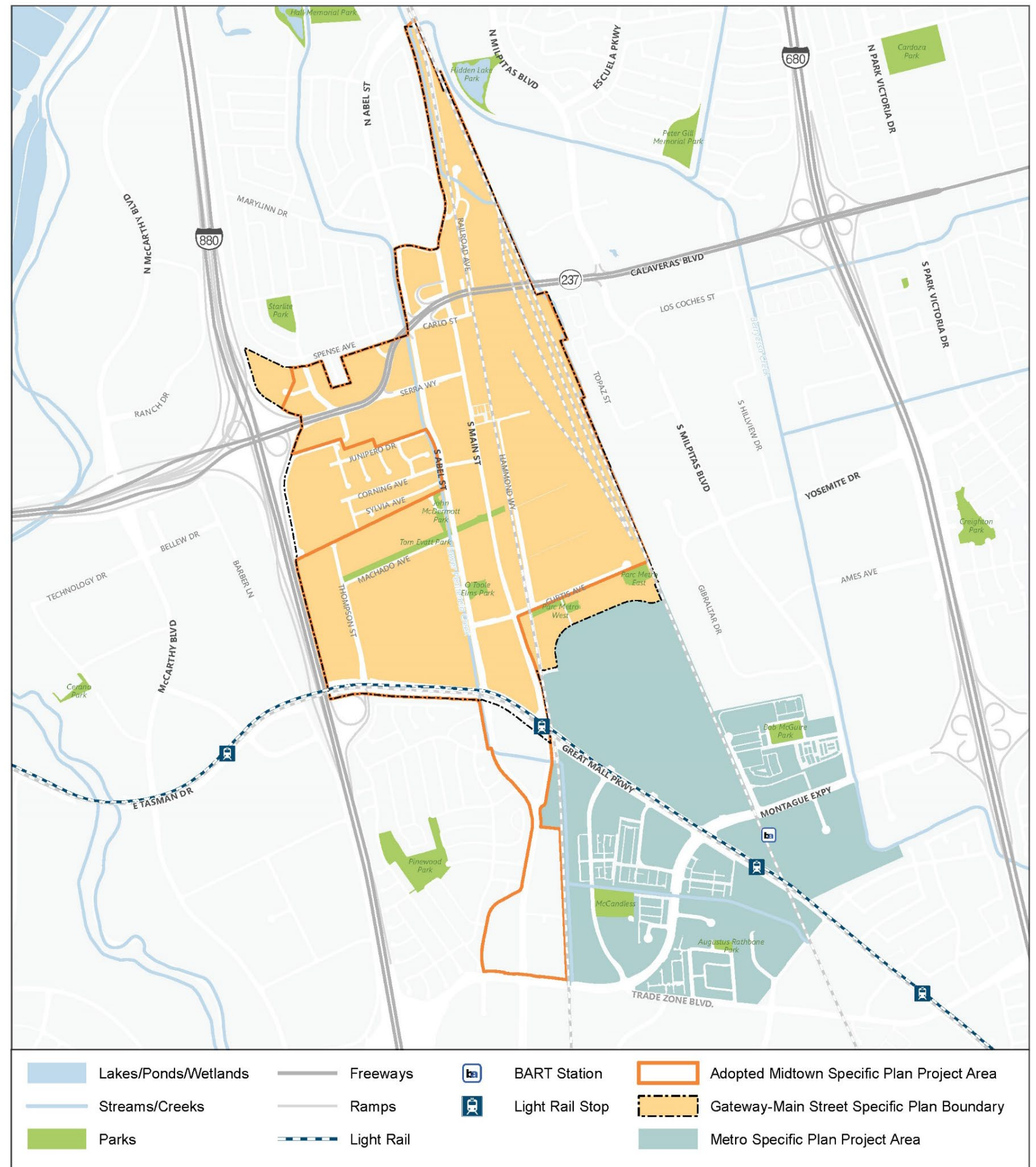


# Planning Process and Timeline



# Gateway-Main Street Specific Plan Area

1. Midtown Specific Plan was adopted in 2002 and updated in 2010.
2. Midtown boundary will be adjusted to focus planning efforts on the revitalization of historic Main Street and the Calaveras gateway.
3. Midtown Specific Plan to be renamed **Gateway-Main Street Specific Plan** to reflect this new focus.

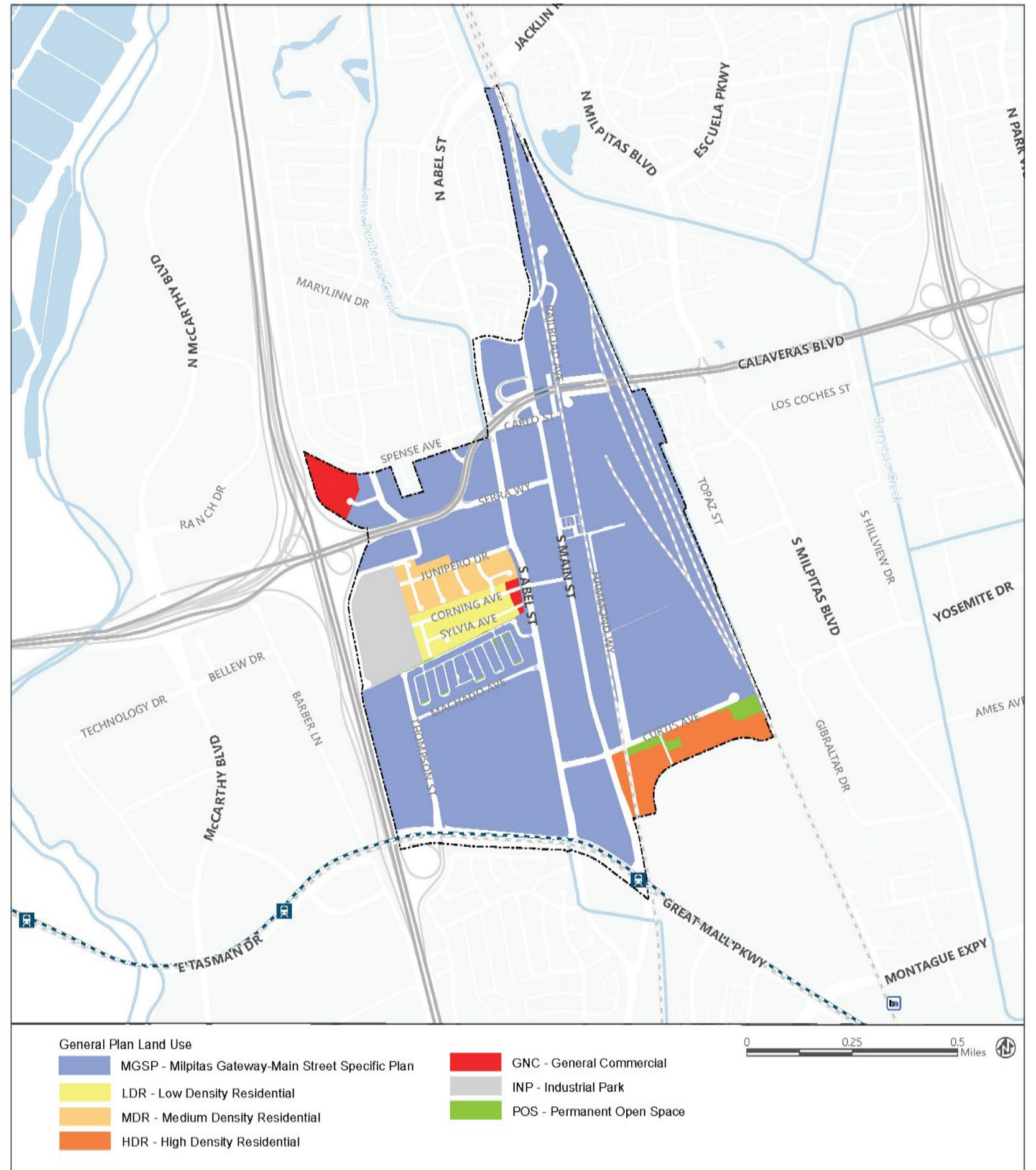




# General Plan Guidance

1. Primarily designated as Specific Plan.
2. Create an economically-viable main street type development.
3. Serve as cultural hub of the city.
4. Allow a variety of land uses to create a compact, walkable, mixed-use center with:
  - Entertainment
  - Retail
  - Commercial
  - High-density Residential
  - Civic
  - Cultural
  - Office
5. Create a central gathering place.

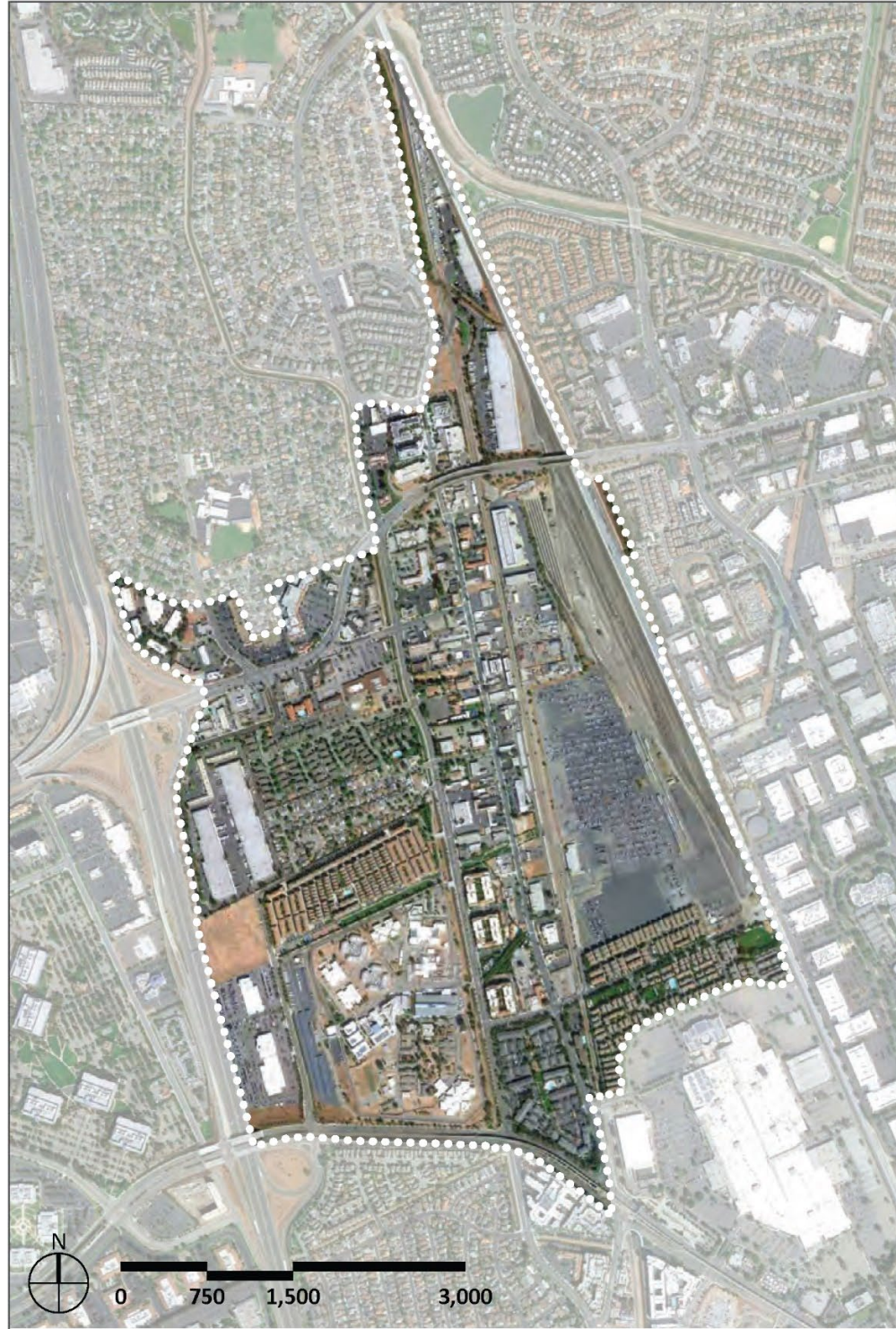
Figure 4. General Plan Land Use



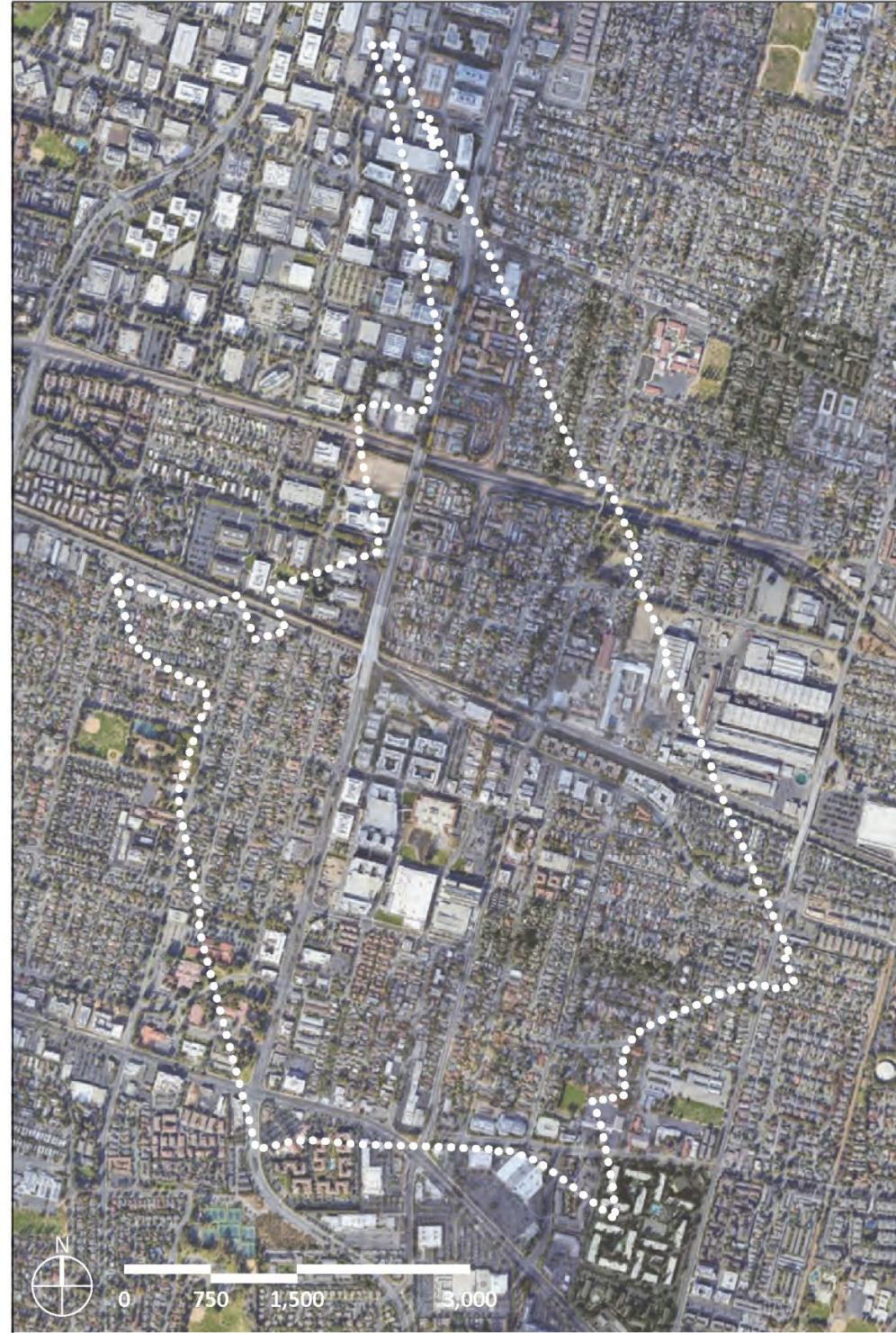


# Scale Comparisons

*The Plan Area is approx. twice the size of Downtown Sunnyvale, and equal in size to Centre City San Diego.*



Gateway-Main Street, Milpitas, CA



Downtown Sunnyvale, CA



Centre City San Diego, CA



# Scale Comparisons

*Other built-out main street districts have a compact, walkable, and pedestrian-friendly block form and scale.*



Main Street-Calaveras Boulevard, Milpitas, CA



Santana Row, San Jose, CA



Japantown, San Jose, CA



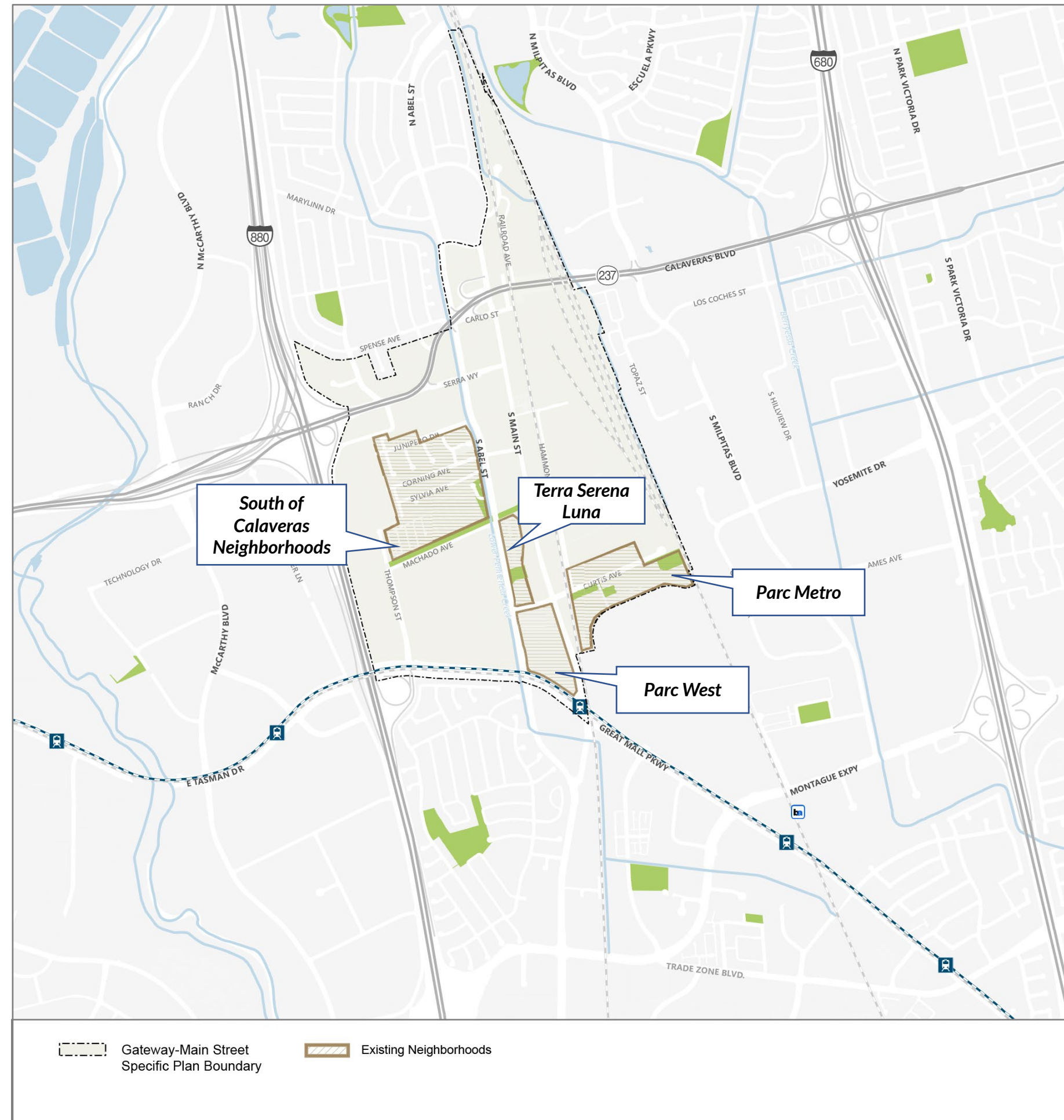
Castro Street, Mountain View, CA





# Gateway-Main Street Specific Plan Area

## Existing Neighborhoods

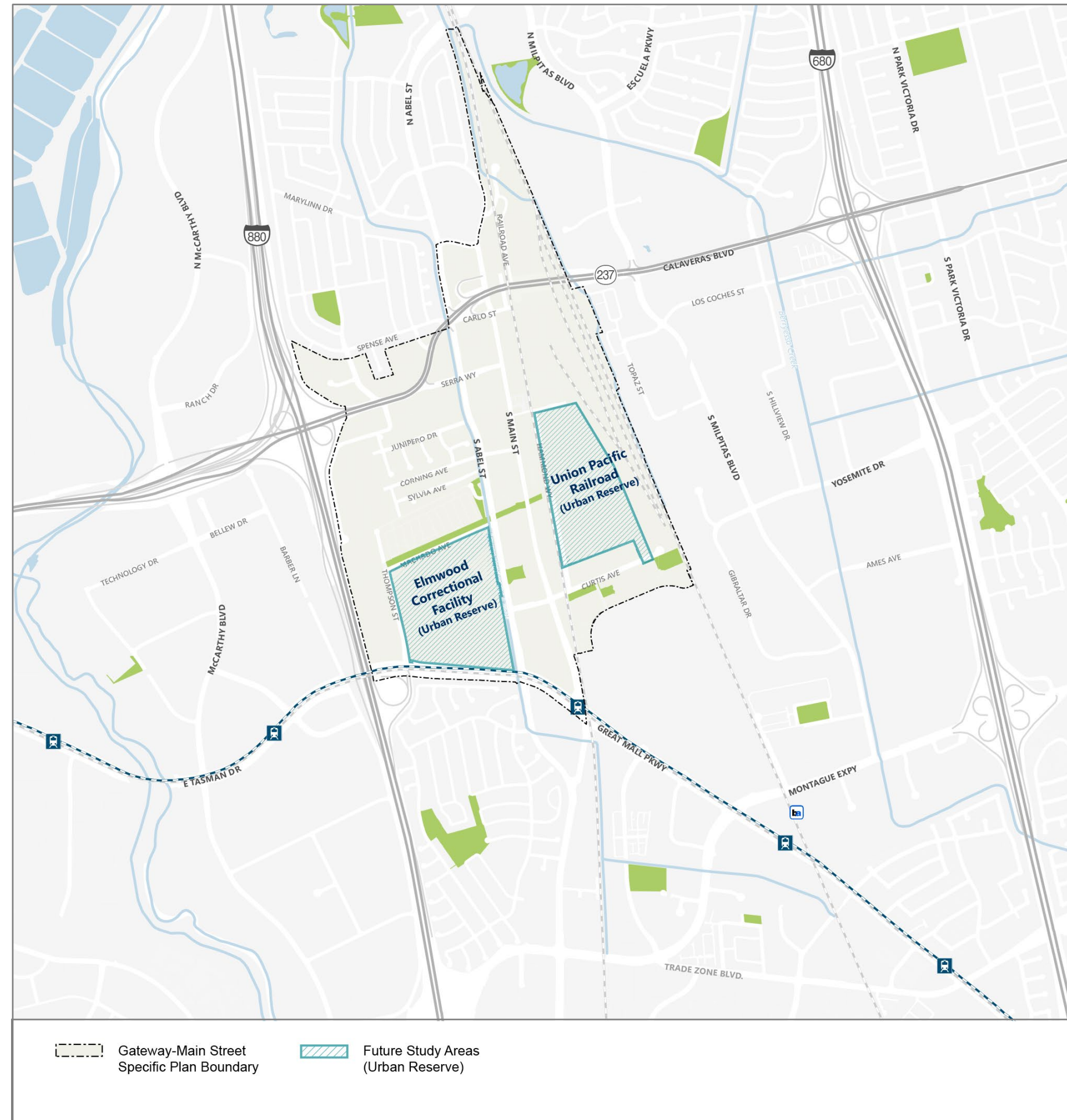




# Gateway-Main Street Specific Plan Area

## Urban Reserve Areas

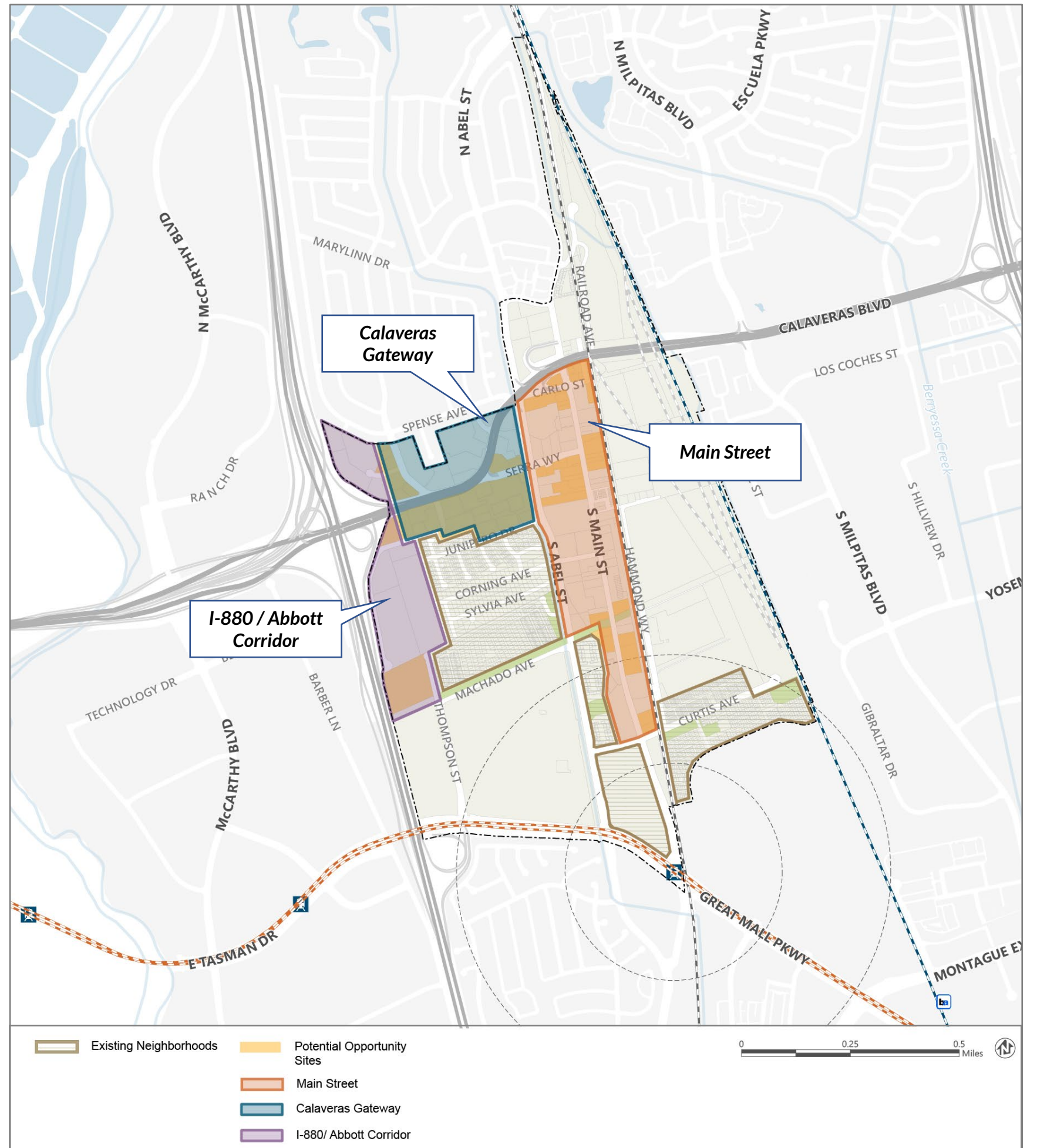
- Elmwood Correctional Facility
- Urban Pacific Freight Yard



# Specific Plan Focus Areas

## The 3 Focus Areas:

- Main Street
- Calaveras Gateway
- I-880/ Abbott Corridor





# The Crossroads

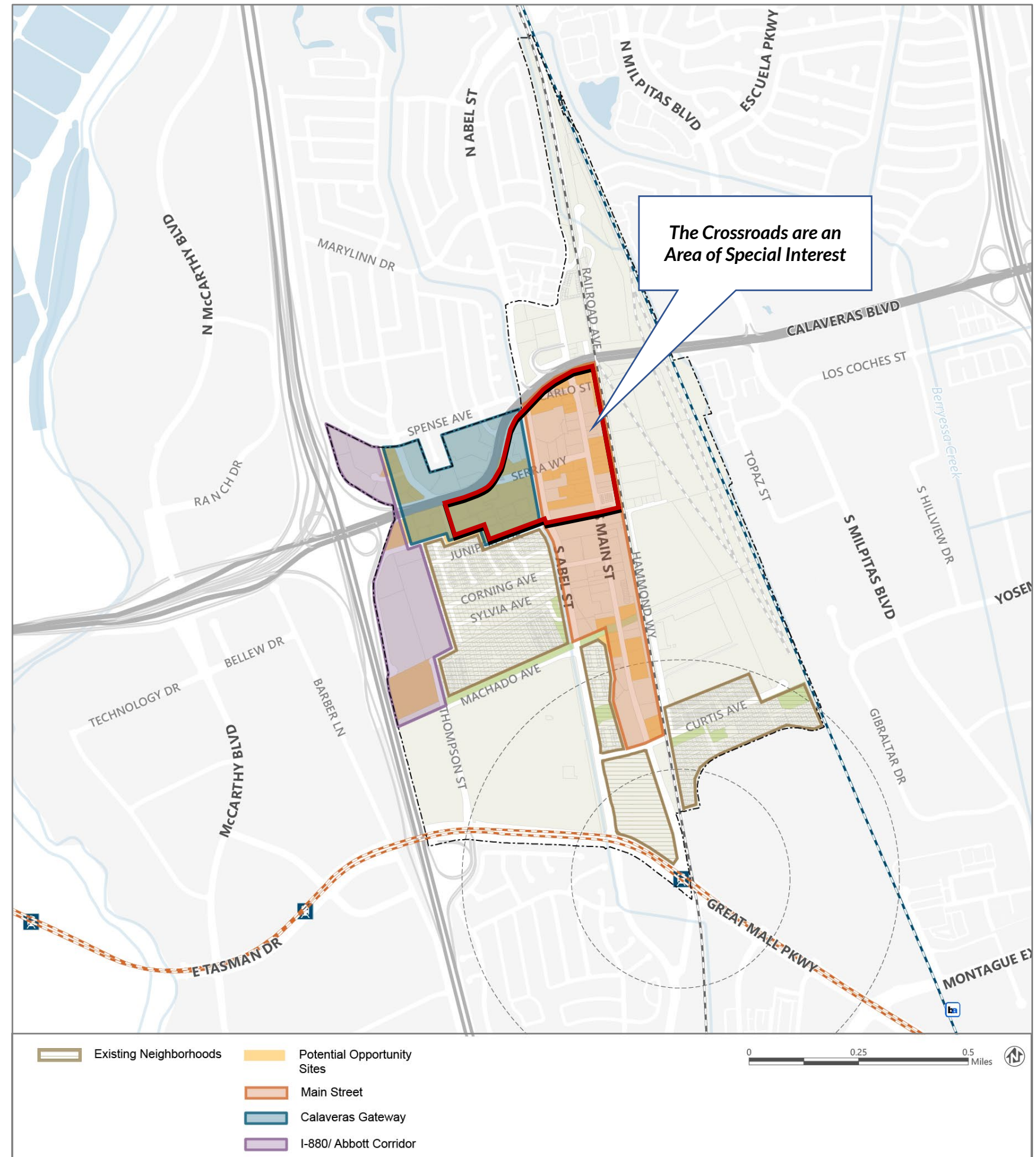
The “Crossroads” are an area of special interest at Calaveras / North Main Street / Serra Way.



Serra Center



Approach to Main Street along Serra Way





# Focus Area 1: Main Street



View along Main Street at Serra Way



Milpa Housing along Main Street



Storefronts along Main Street



Bird's Eye View of the Main Street Focus Area (Looking East)



# Focus Area 2: Calaveras Gateway



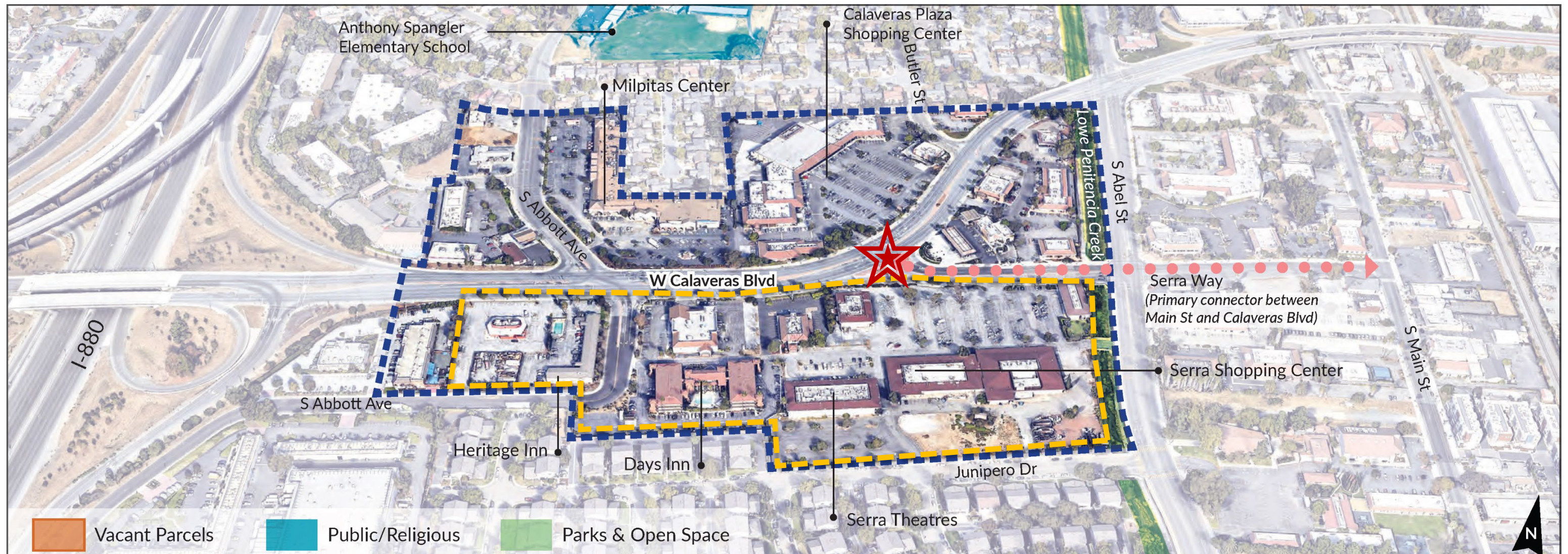
Calaveras Boulevard



Entering Serra Way from Calaveras Boulevard



Serra Center



Bird's Eye View of the Calaveras Gateway Focus Area (Looking North)



# Focus Area 3: I-880/Abbott Corridor



Vacant Parcel



Calaveras Center



Entry to Abbott Avenue from Calaveras Boulevard

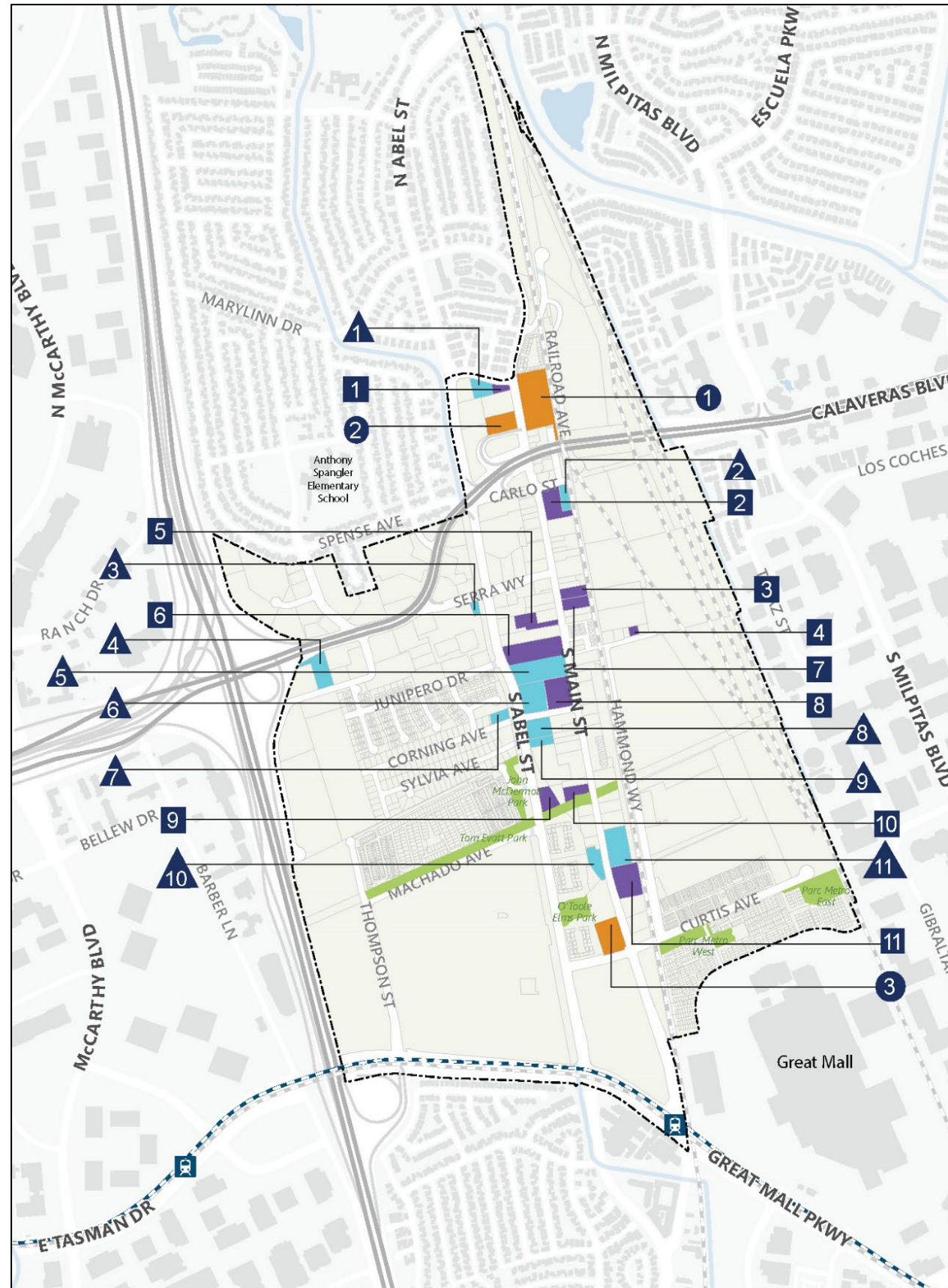


Bird's Eye View of the I-880/Abbott Corridor Focus Area (Looking West)



# Social, Cultural, and Community Anchors

1. The area is home to a mix of religious, cultural, educational, and public uses that converge along Main Street.
2. These anchors are key to what makes Main Street a diverse, unique center, and will be important to the planning process.



- Religious/Cultural Facilities
- Public Use Anchor
- Educational Facilities



Milpitas Library (Grammar School)



Avatamsaka Buddhist Lotus Society



St. John Baptist Catholic Church



Jain Center of Northern California



2

Opportunities:  
What do you envision?



# Future of Main Street



Active Main Streets



Mixed-Use



Community & Neighborhood Services



Historic, Cultural & Social Nodes



Outdoor Programs





# Housing & Development



Live-Work



Urban Housing Types



Retail & Entertainment



Townhomes and Walk-Up



Senior Housing



Flex / R&D



Neighborhood Retail and Grocery





# Public Realm & Amenities



Formal Open Space or Town Square



Place to Play



Streetscape and Signage Improvements



Cultural Crossroad



Urban Activation



Informal Open Spaces



Places to Sit & Rest



# Transportation & Access



Separated Bike-Lane or Cycle Track



Shared-Use Mobility Hub



On-Demand Shuttles



Crosswalks and Pedestrian Improvements



Off-Street Bike Trail



Micro-Mobility

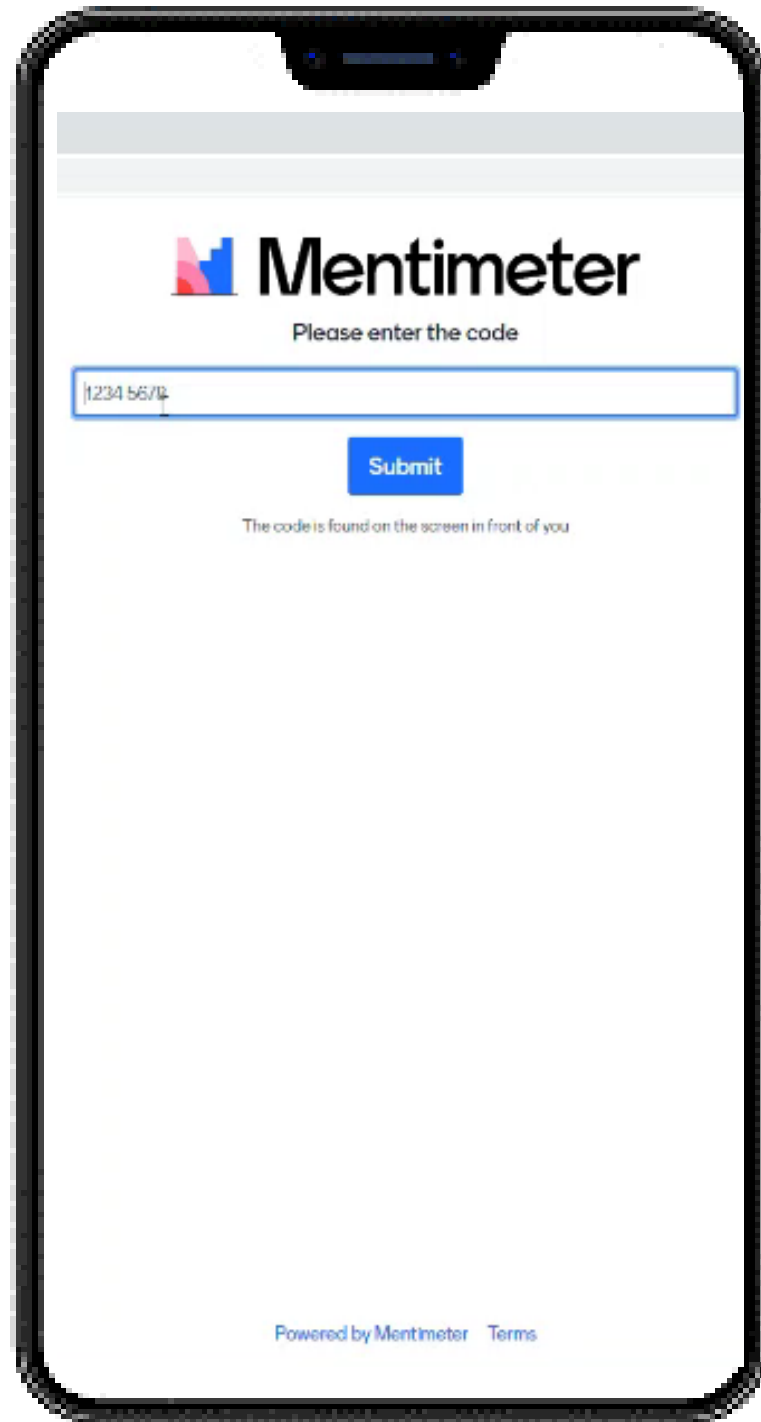


3

# Polling Questions & Small Group Breakout Discussion



# Live Polling



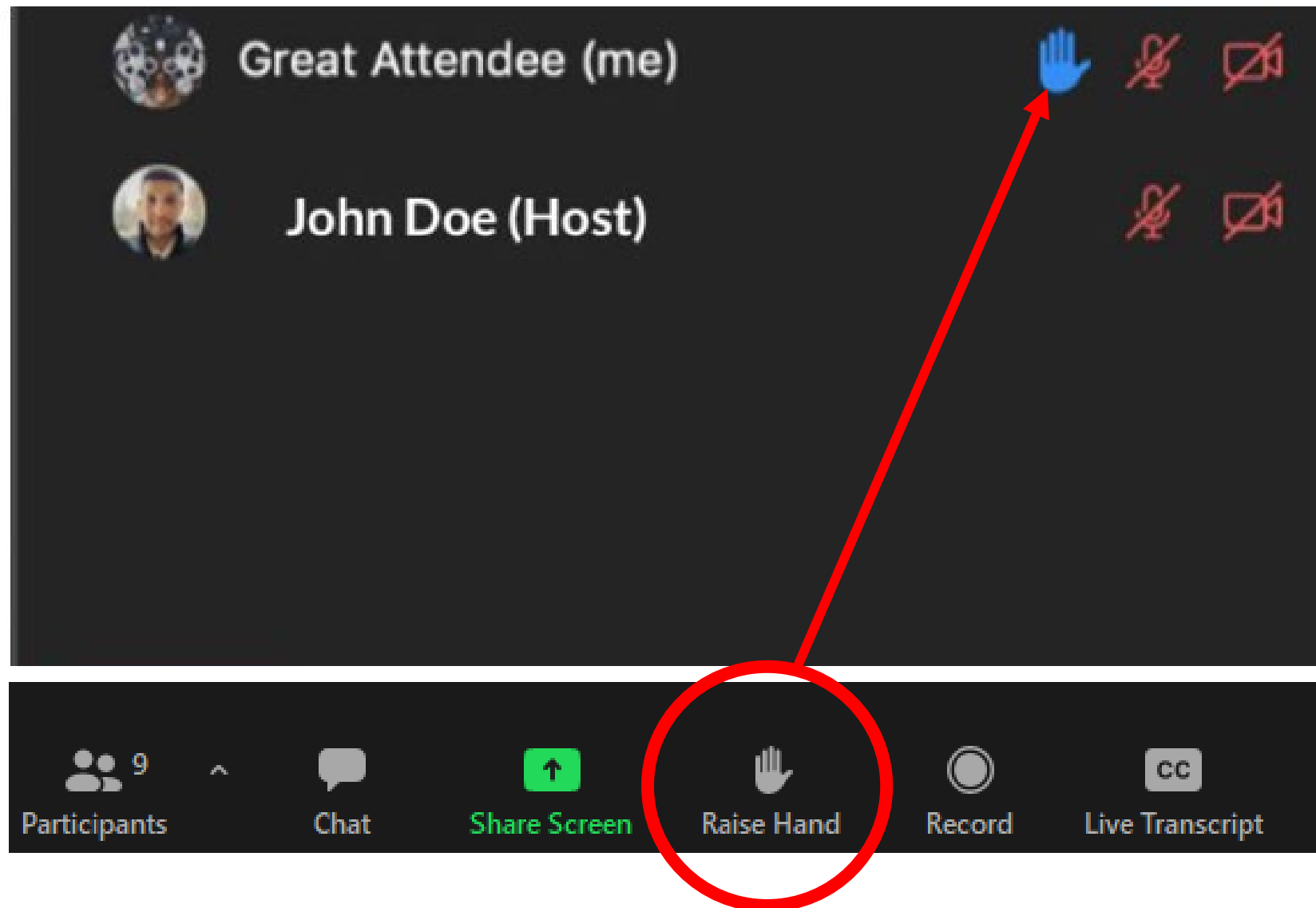
Go to  
[www.menti.com](https://www.menti.com)  
Enter code: 9149 1466



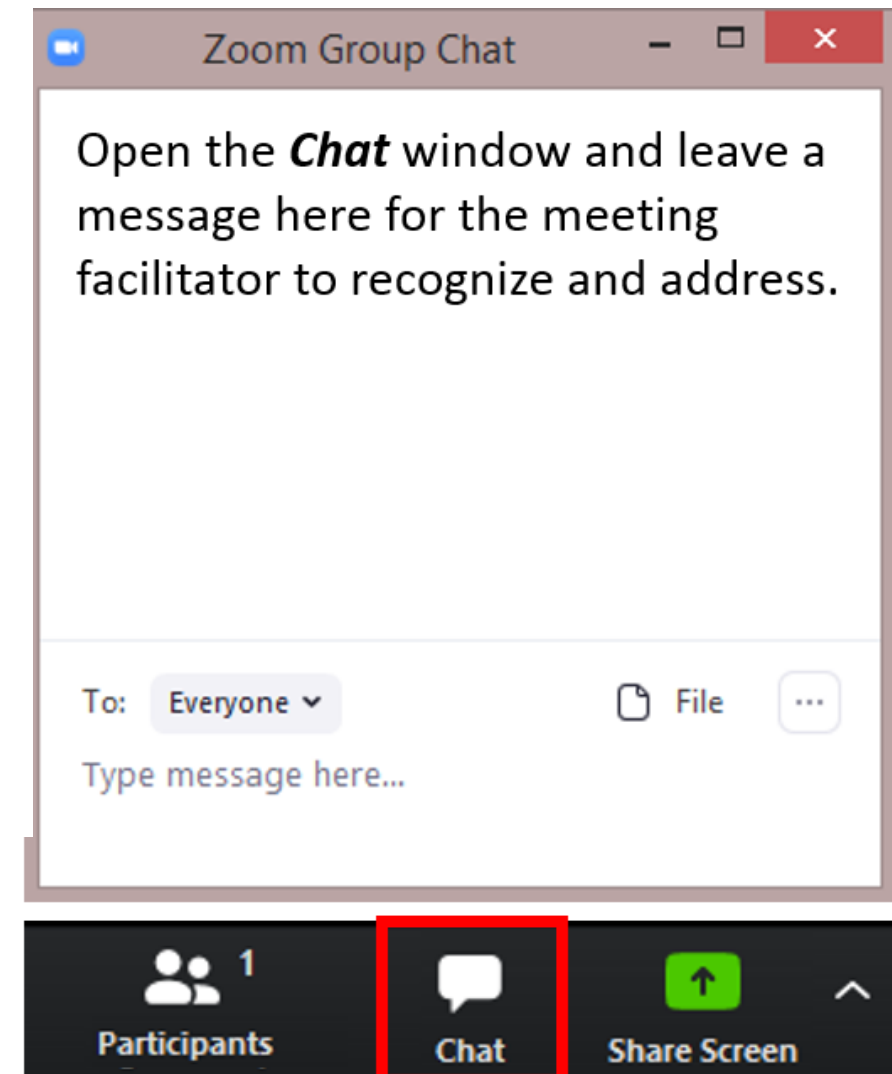


# Breakout Discussion Facilitation

RAISE HAND VIRTUALLY THROUGH PARTICIPANTS/REACTIONS TOOL



CHAT FUNCTION





# Small Group Breakout Discussions and Report Back

Room #2  
Facilitator: Matthew  
Notetaker: Angela

**Discussion Prompt 1: What do you Like About the Area?**  
1. What do you enjoy about visiting the Gateway - Main Street area?  
Do you have a favorite place you would like to share?

Menti Slide Snapshot

Comments/Questions  
Chat Comments  
Verbal Comments

MAP

**Discussion Prompt 2: What is your Vision?**  
1. What kind of place should the Gateway-Main Street area become?  
2. Are there other places (e.g., Main Streets, Downtowns) that you think of when you imagine the future?

Menti Slide Snapshot

What is your Vision?

**Discussion Prompt 3: Housing & Development**  
1. What kind of housing would you like to see in the area? Where should it be located?  
2. What other uses would you like to see?

Menti Slide Snapshot

**Discussion Prompt 4: Open Space & Public Realm**  
1. What kinds of public open spaces are needed in the area?  
2. What type of public realm improvements would you most like to see?

Menti Slide Snapshot

**Discussion Prompt 5: Transportation and Access**  
1. What improvements would make you feel more comfortable walking/biking here?  
2. What improvements would make you feel more comfortable using bus transit or the BART/VTA station?  
3. Are there any other access improvements you would like to see?

Menti Slide Snapshot

Transportation & Access

1. **What do you like about the Area?**
2. **What is your Vision?**
3. **Housing & Development.** What kind of housing would you like to see? Where should it be located? What other uses would you like to see?
4. **Open Space & Public Realm.** What kinds of public open spaces are needed in the area?
5. **Transportation & Access.** What improvements would make you feel more comfortable walking/biking here?



4

Next Steps



# Next Steps

## 1. Continued Engagement (Spring/Summer 2022)

- Prepare Workshop #1 Summary
- Survey open until July 30<sup>th</sup>

## 2. Initial Visioning/Plan Concepts (Summer/Fall 2022)

## 3. Plan Strategies: Community Workshop #2 (Fall/Winter 2022)





**Thank you for  
your participation!**

For Project Updates Visit:  
[MilpitasMainStreet.org](http://MilpitasMainStreet.org)

Questions or Comments?  
Contact: **Jay Lee, AICP**  
[MilpitasMainStreet@milpitas.gov](mailto:MilpitasMainStreet@milpitas.gov)  
(408) 586-3279